



**MiLEAP**

**Michigan Department of Lifelong  
Education, Advancement, and Potential**

**The Power of MiLEAP | Dr. Beverly Walker-Griffea**

**“Mott became my parents”**

Ieyeshia Bates, Mott Community  
College Graduate

# MILEAP

Michigan Department of Lifelong  
Education, Advancement, and Potential



From Childbirth through Postsecondary to Prosperity

# Michigan's Youngest Learners Under 5

- **Children under 5: 682,352**
- **Median family income: \$63,498**
- **Children with all parents working: 65%**
- **Children with parents who lack secure employment: 27%**
- **Children living in households with high housing costs: 25%**
- **Children living in poverty: 20%**



# Michigan's Children

- **Children with parents who lack secure employment: 27%**
- **Children living in households with high housing costs: 25%**
- **Children living in poverty: 18%**
- **Children living in a Single Parent household: 34%**
  - **42% Are Black and Hispanic Families**



# Michigan's Childcare Costs

- **11%** of two parents income is used for childcare costs
- **38%** of single parent households wages is used for childcare costs
- **23%** gap in childcare spaces for licensed care.



# Michigan's Learners

- **Nearly 60%** of Michigan 4-year-olds are not enrolled in publicly funded PreK
- **40%** do not attend any kind of formal PreK program
- **72%** 4<sup>th</sup> graders are not reading proficient
- **75%** of 8th graders are not math proficient
- **20%** of high schoolers are not graduating on time



# Michigan College Enrollment and Completion Rates

## Michigan College Enrollment Rates by Race/Ethnicity

*Students of color are less likely to enroll in college.*

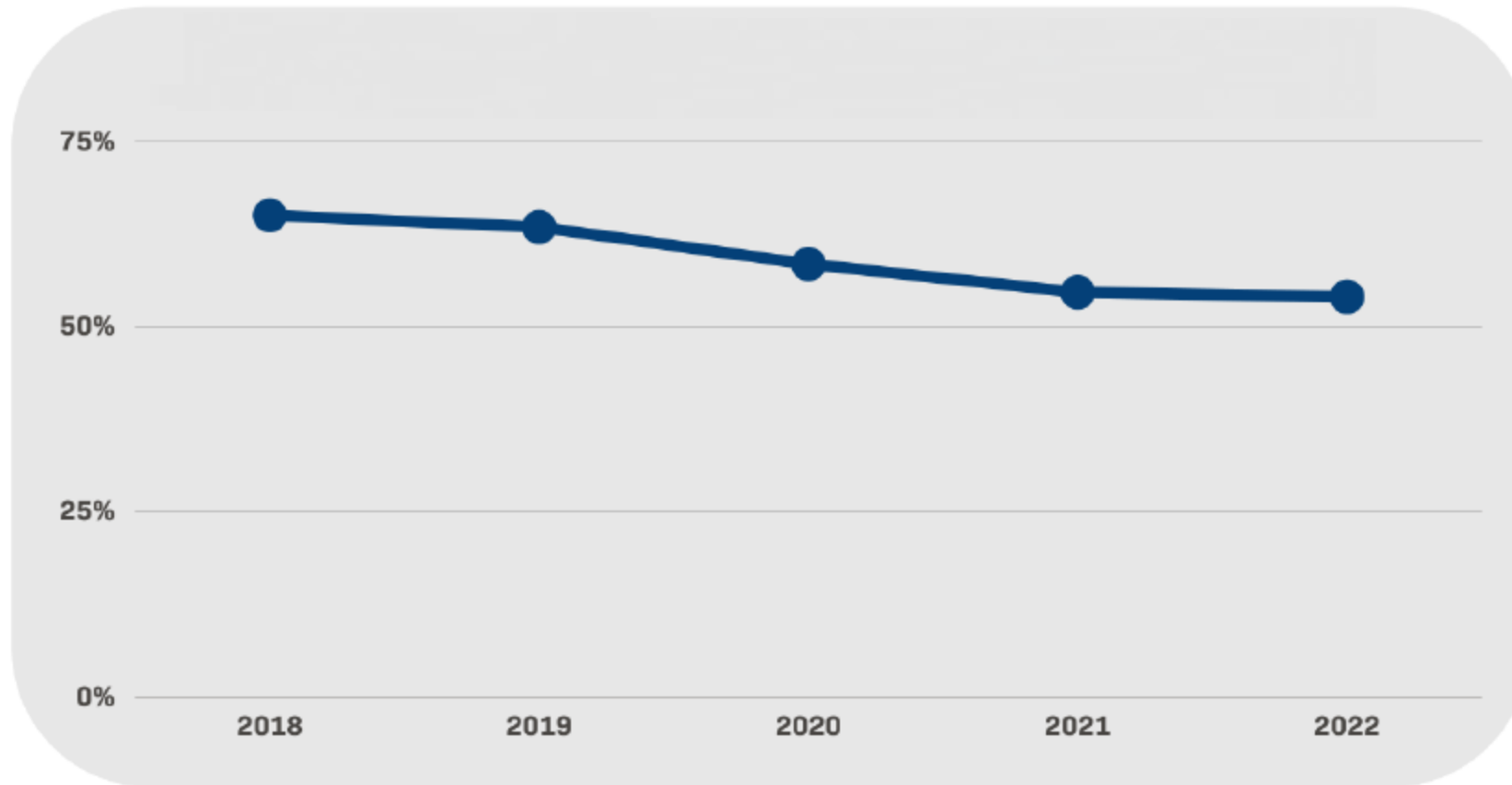
- 50% Indigenous
- 46% African American
- 49% Hispanic
- 62% White

## Michigan College Completion Rates by Race/Ethnicity

*Students of color are less likely to complete college.*

- 31.4% Indigenous
- 19.5% African American
- 25.6% Hispanic
- 44.9% White

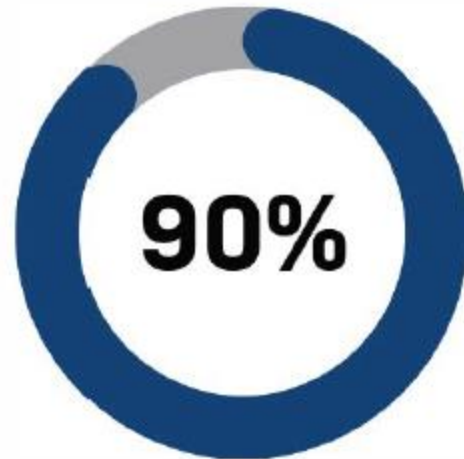
# Michigan FAFSA Completion Rate



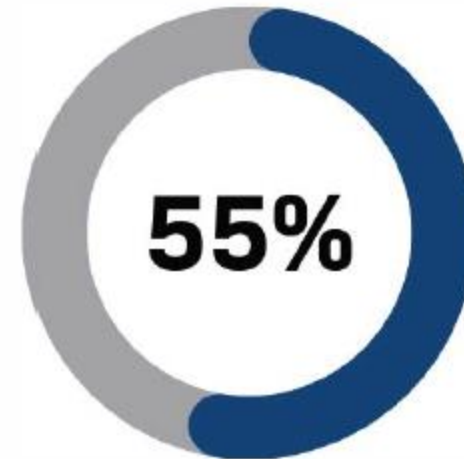
Source: Michigan College Access Network

# National Direct College Enrollment Rates

*Students who complete the FAFSA are more likely to immediately enroll in college after graduation.*



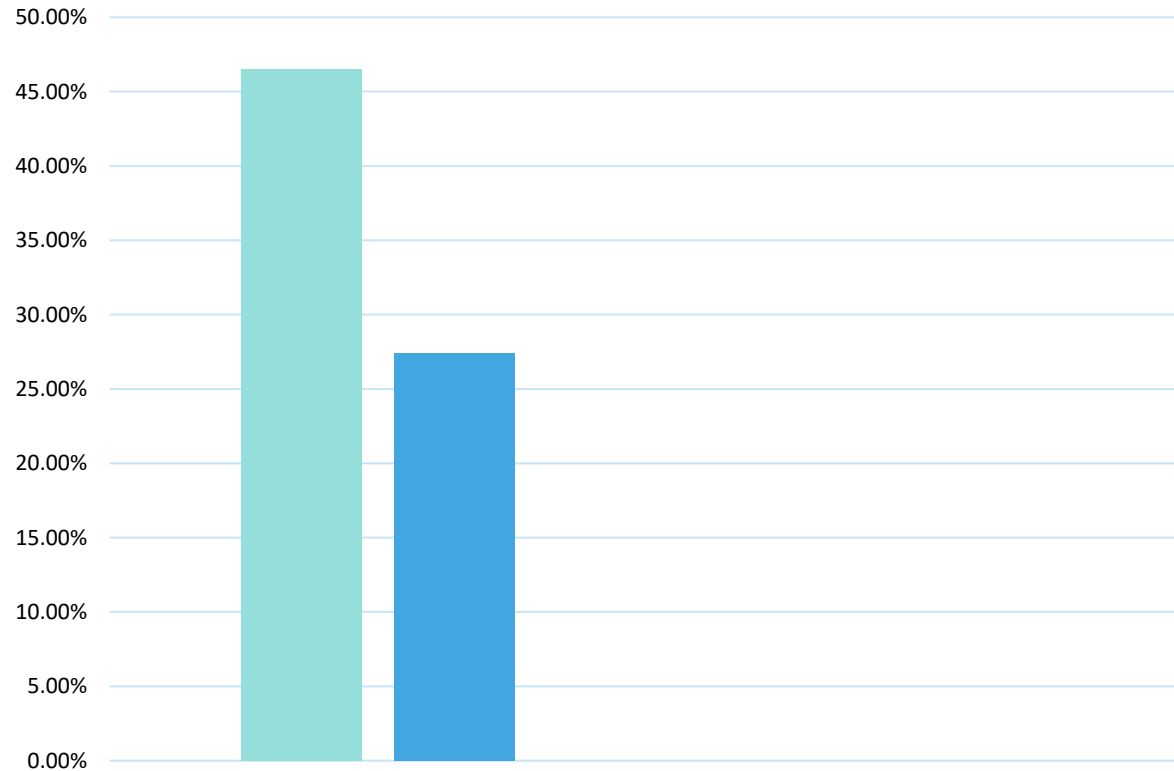
Students who complete the FAFSA that immediately enroll in college



Students who do not complete the FAFSA that immediately enroll in college

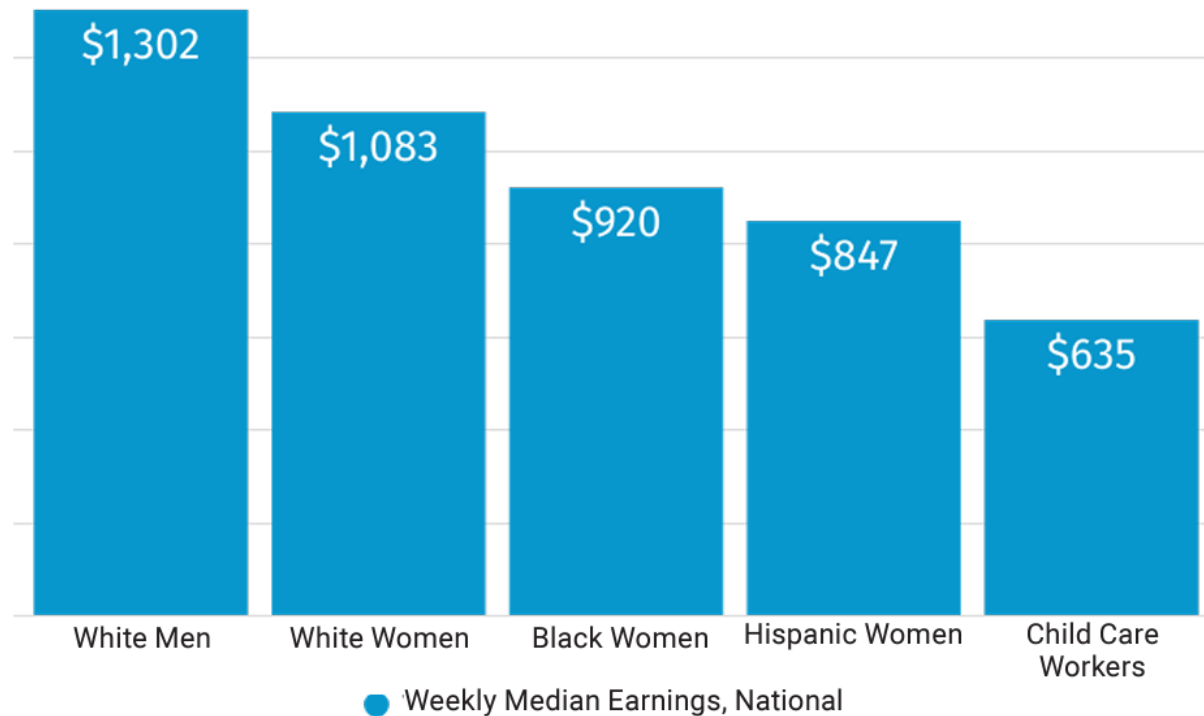
# Credential Attainment Rate

- 46.5% for White Michiganders
- Only 27.4% for Black Michiganders, which is **lower than every other race/ethnicity group in Michigan.**



# Wage Gap Data

*The wage gap for Black and Hispanic women is exacerbated by low pay in sectors where they are overrepresented, including childcare*



Source: Bureau of Labor Statistics | National estimates from the Quarterly Census of Employment and Wages, 2023.

# Office of Early Education

- PreK for All
- Free or low-cost childcare
- MI Tri Share
- Expanding childcare capacity and ensuring safety
- Birth to 5 early intervention and special education



# Office of Education Partnerships

- Out of School Time Grant program
- MiFamily Engagement Regional Centers (Hubs)
- Governor's Education Advisory Council



# Office of Higher Education

- Sixty by 30 Goal
- Student Success Programs and Resources
- Michigan Achievement Scholarship, including the Community College Guarantee
- Michigan Reconnect
- FAFSA Completion
- Transfer Improvement



# MILEAP POWER !

- Women
- People of color
- Impoverished Communities



“I became part of a larger network of support through Workforce at MCC.”

- Ummy Siddiqui,  
2022 MCC Graduate



“I am so grateful for my new circle of friends.”

- Caroline Metzger,  
Community College student

# Postsecondary Education is the Key to Prosperity

More than 90% of Michigan's "Michigan's Hot 50" highest demand jobs through 2032 require **some amount of postsecondary education**



# It's All About People

## Ash

- After one year of participating in the PreK program in Lansing, his mom noticed that his social skills improved, he was communicating better, and he had developed excellent academic skills to help him succeed in kindergarten and beyond.
- PreK empowers Ash to grow and learn, and PreK also helps his busy parents as he spends the day in a safe place with caring adults.



# It's All About People

## Foxanne

- Foxanne Davis is a Michigan Reconnect student in Wayne County Community College's nursing program.
- She returned to school 4 years ago, but was limited to taking one class at a time due to costs.
- Through the power of Reconnect, she is now close to finishing her degree so she can get out in the workforce.

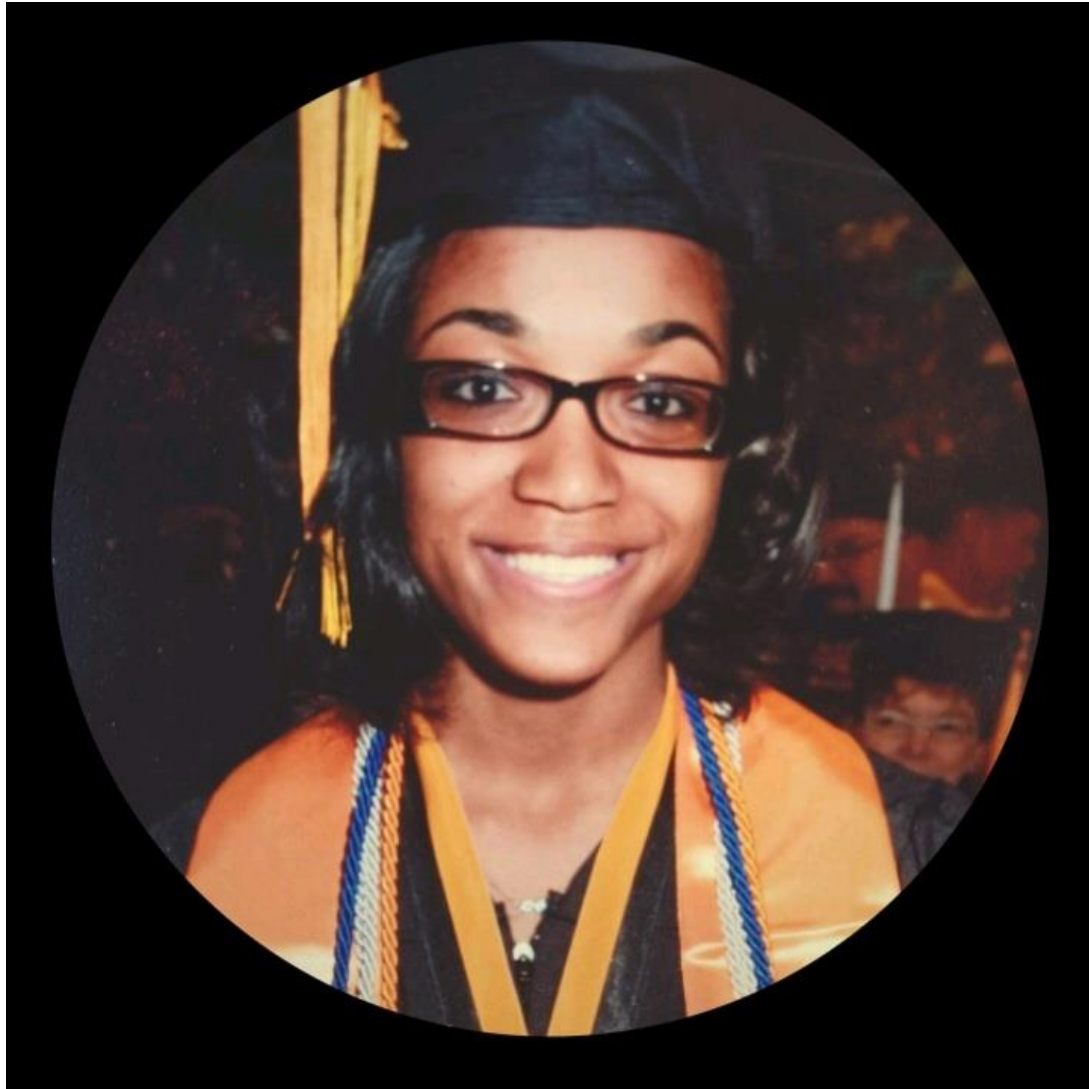


# It's All About People

## Luis

- Luis Uribe never really planned on going to school... he was preoccupied with making ends meet for his family.
- Thanks to Michigan Reconnect (and his wife for enrolling him), he is now pursuing his passion of working with his hands as an auto engineer!
- Through the power of Reconnect, he was able to take two years to increase his skills and open a new world of opportunity.
- Days after graduation from Northwestern Michigan College, Luis began a full-time job at a dealership and is now making more money than he ever has.





“Just because a person has a low GPA in high school doesn’t make you stupid.”

Iyeshia Bates,

2015 MCC Graduate

2017 Wayne State  
Graduate



# MiLEAP POWER!

[Michigan.gov/MiLEAP](https://Michigan.gov/MiLEAP)

**Find MichiganLEAP on:**

- **Facebook**
- **X/Twitter**
- **Instagram**
- **LinkedIn**